

# MAIN ENGINE CONTROL AND SAFETY SYSTEM

COMMAND YOUR VOYAGE, ENSURE SAFETY: OPTIMIZE WITH CONFIDENCE

**WE OFFER**

Transform your vessel's propulsion and safety with our Main Engine Control and Safety System. Engineered for durability, it ensures precise main engine control, prioritizing safety for a worry-free maritime journey ahead

**ENHANCED EFFICIENCY  
RELIABILITY AND PEACE  
OF MIND**



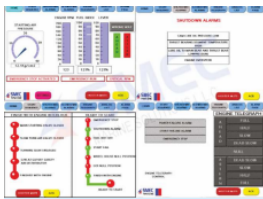
## FEATURES

- Ensuring stable and reliable performance
- Elevate maintainability and concurrently reduce maintenance cost
- Compliance with environmental standards
- Realtime diagnostics
- User friendly interface
- Utmost precision and unrivaled safety
- Mitigating risks and safeguarding against any untoward incidents.



## COMPONENTS

- Advanced alarms promptly notify personnel of system issues
- Sophisticated remote control boosts ship engine safety and efficiency
- Emergency shutdown mechanisms and automatic fire extinguisher systems



[www.smec.in](http://www.smec.in)

**WE ARE READY TO SERVE YOU BETTER**

**CONTACT US**



+91 7356895777



[nidheesh@smecmarine.com](mailto:nidheesh@smecmarine.com)



Maveli Rd, Tagore Nagar, Gandhi Nagar, Kadavanthra, Ernakulam, Kerala 682020



[www.smec.in](http://www.smec.in)