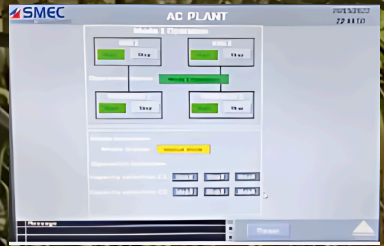


AC CONTROL AND SAFETY SYSTEM



ENSURING SEAMLESS OPERATION & ENHANCED SAFETY

WE OFFER

UNRIVALED RELIABILITY,
UNPARALLELED
FUNCTIONALITY &
EFFORTLESS OPERATION

Elevate your ship's electrical prowess and set sail towards safe and efficient navigation. Tailor your ships with the most advanced electrical control system equipped for optimal performance



FEATURES

- Water pressure sensor
- Compressor - 2 Nos
- Outlet temperature
- Pumps and compressor overload
- Oil pressure tripping sensor
- LP tripping sensor controller
- HP tripping controller
- Cutout chilled water temperature
- Capacity controller (100% | 66% | 33%)

AC PLANT		PLANT 1 STATUS		PLANT 2 STATUS	
Water Pressure	28.5 bar	Water Pressure	28.5 bar	Water Pressure	28.5 bar
Compressor	ON	Compressor	ON	Compressor	ON
Oil Pressure	2.5 bar	Oil Pressure	2.5 bar	Oil Pressure	2.5 bar
LP Temperature	100.0	LP Temperature	100.0	LP Temperature	100.0
HP Temperature	100.0	HP Temperature	100.0	HP Temperature	100.0
Capacity	100%	Capacity	100%	Capacity	100%



CONTACT US

+91 7356895777

nidheesh@smecmarine.com

Maveli Rd, Tagore Nagar, Gandhi Nagar, Kadavanthra, Ernakulam, Kerala 682020

www.smecc.in

www.smecc.in

WE ARE READY TO SERVE YOU BETTER